

**SANTA MONICA-MALIBU UNIFIED  
SCHOOL DISTRICT  
JOHN ADAMS MIDDLE SCHOOL**

QUICK IMPLEMENTATION OUTDOOR LEARNING SPACES





## OUTDOOR LEARNING AND PANDEMICS THROUGHOUT HISTORY

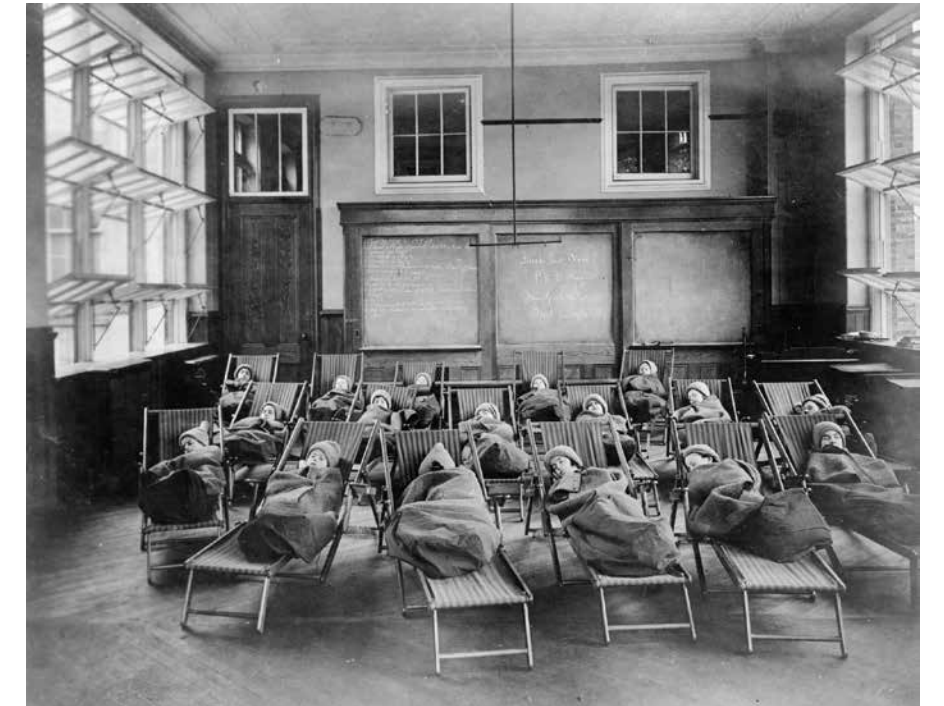
Outdoor learning environments have been used during pandemics to help ease the transmission of disease. In the early nineteenth hundreds, outdoor learning environments were used to help stop the spread of tuberculosis.

“In the early 1900s, during a tuberculosis outbreak in Rhode Island, kids attended a school with the **windows always open**, even in the winter. They sat in sleeping-bag-like blankets and had heated soapstones placed at their feet, The New York Times reported. Eventually, there were **65 such “open air” schools** around the country.”

In Providence, Rhode Island, an empty brick building was converted with ceiling height windows kept open at all times. In winter, students were outfitted in wearable blankets with footwarmers to keep warm.

The school was a success and replicated in 65 open-air schools around the country, with similar buildings or simply outdoor classrooms. None of the children got sick.

Similar experiments have been undertaken in the wake of Covid-19, with similar results. A review of 7,000 cases in China recorded only one instance of fresh-air transmission.

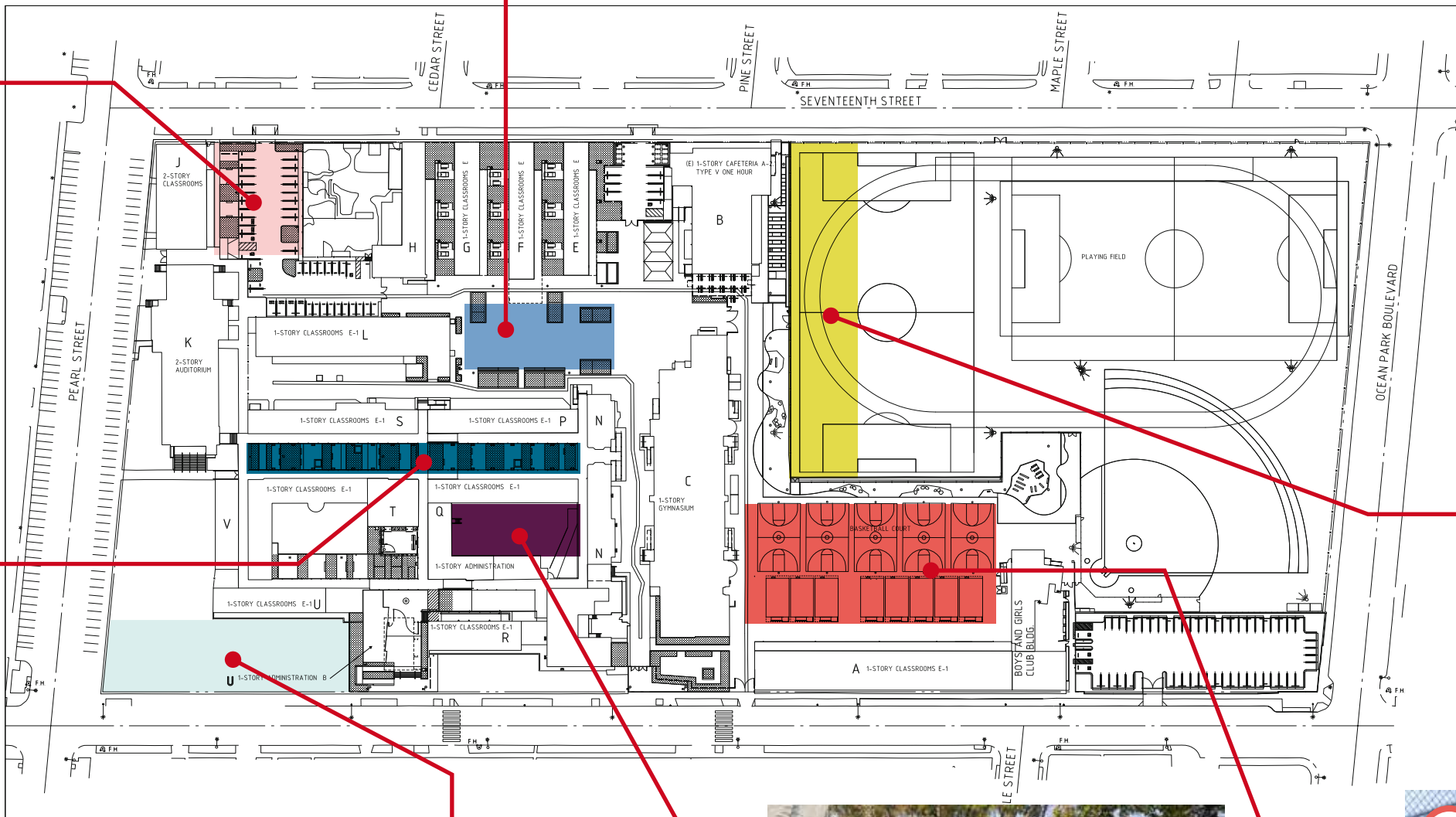


*Photos and information taken from the New York Times article “Schools Beat Earlier Plagues With Outdoor Classes. We should, Too.”*

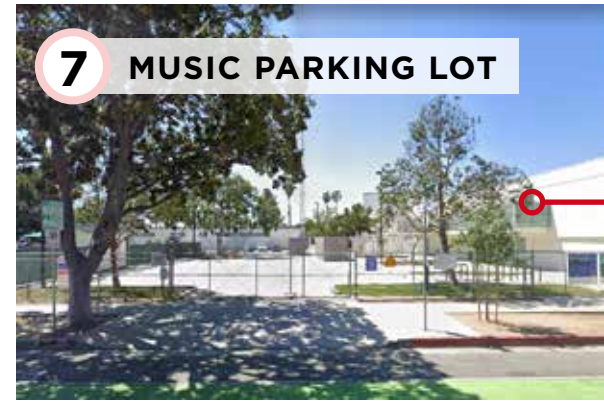




6 CAMPUS QUAD



Based on our knowledge of the JAMS campus now and what is planned in the future, we identified 8 areas that lend themselves for use as outdoor classrooms. These areas are mostly already paved and accessible and we are proposing a variety of solutions that provide defined spaces for learning.



7 MUSIC PARKING LOT



5 LINEAR COURTYARD



1 EDGES OF FIELD



4 BIG LAWN



3 8TH GRADE COURTYARD



2 TENNIS COURTS





Campus Quad



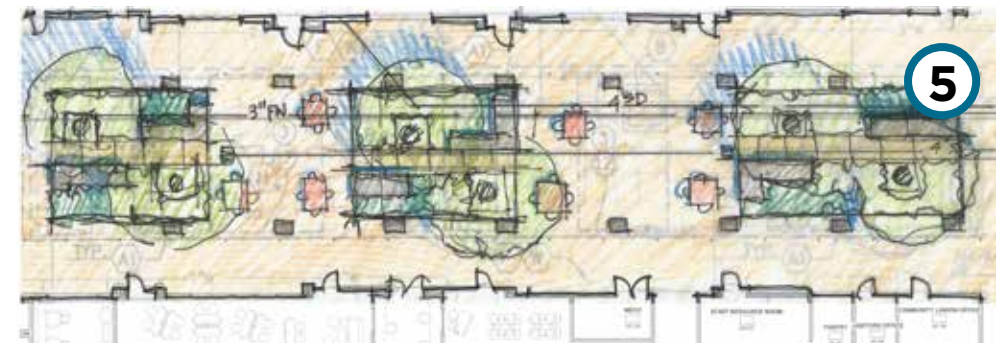
Campus Quad

Outdoor learning has been a major effort in our work on the JAMS Campus.

Many of these ideas can be quickly implemented as maintenance or under the DSA emergency measures rules. The linear courtyards, the main quad, and the eighth grade quad can all be readily implemented with some modifications of what was presented.



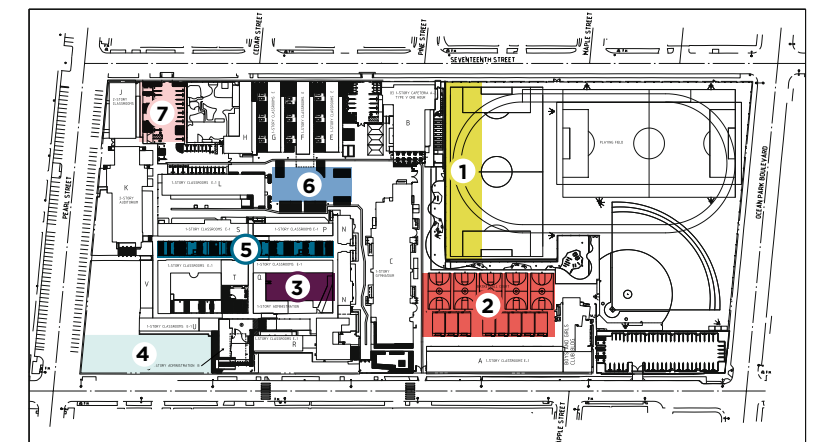
Linear Courtyard



Linear Courtyard



8th Grade Courtyard





# HOW DO WE IMPLEMENT THESE IDEAS **NOW?**

Emphasis on **now**.

**All week, our team has been brainstorming solutions that can be put into place quickly, efficiently, and semi-permanently.**

In Southern California we have different concerns and limitations to outdoor classrooms, primarily sun and heat. But we're also fortunate that our climate is mostly moderate during school months.

Here we explore how John Adams Middle School can take advantage of the existing outdoor spaces on campus to return to school safely.



Flexible



Spontaneous

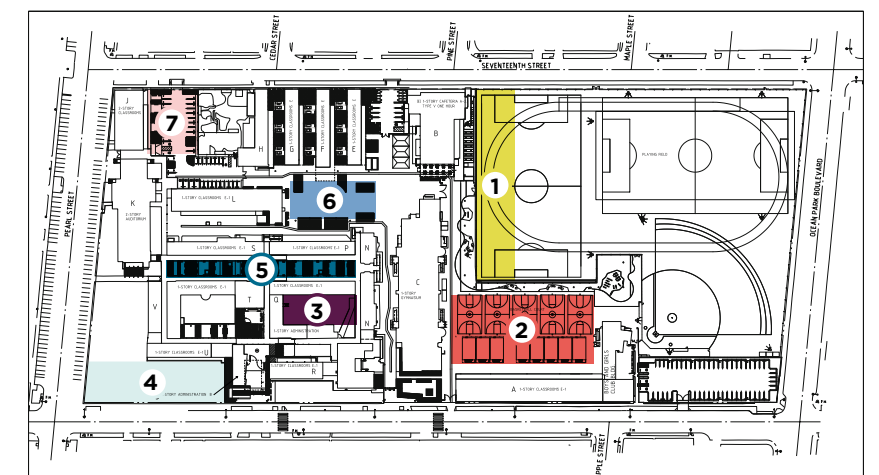




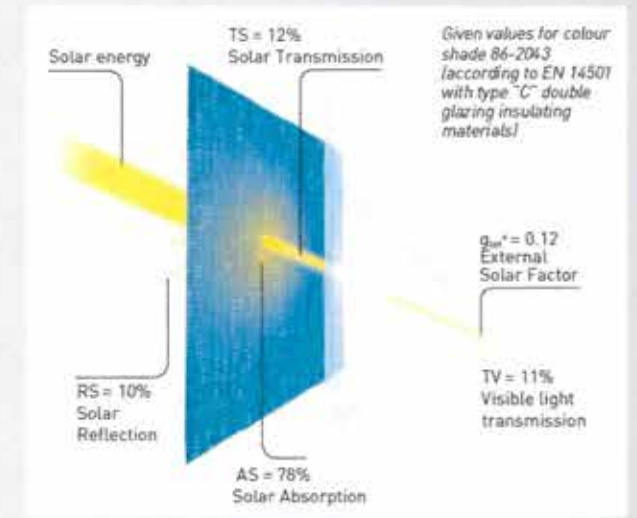
Maintain the fireworks lawn but rework it with turf covered mounds that can serve as seating to establish outdoor classrooms.



Inflatable arches in different colors and graphics can be used to define class areas.







### Thermal protection and light control

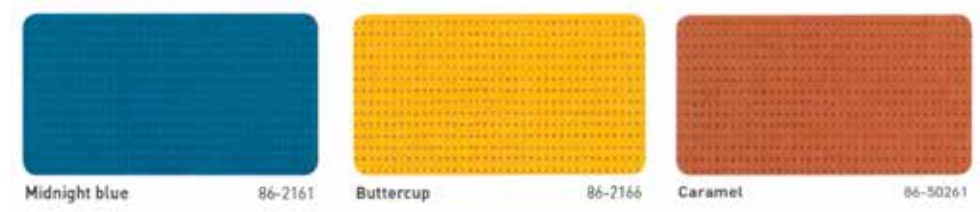
Soltis 86 offers a mesh opening, ideal for combining:

- efficient solar protection,
- sufficient natural light contribution to ensure occupier well-being.

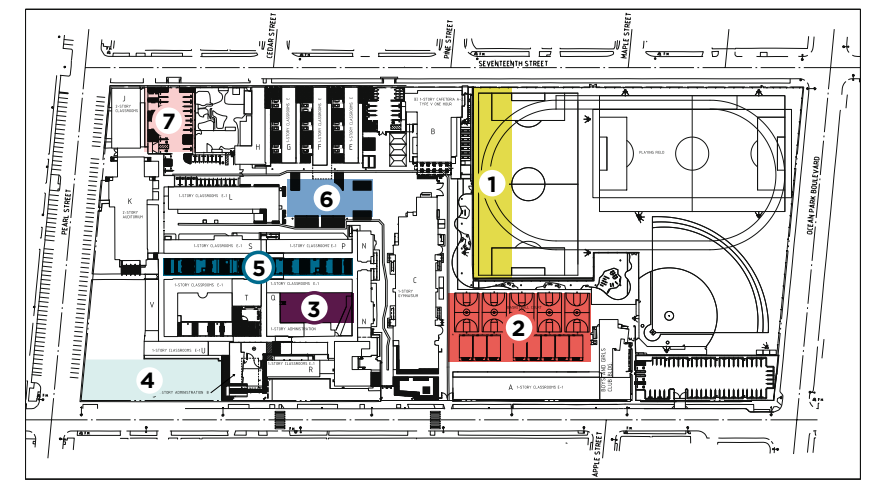
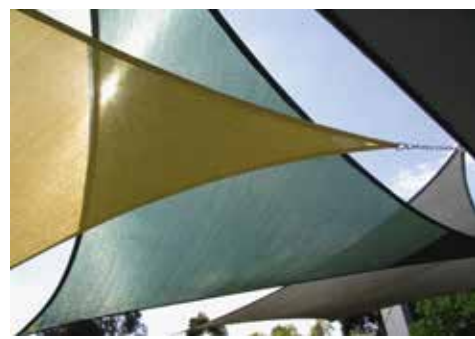
Soltis 86 therefore plays a full part in:

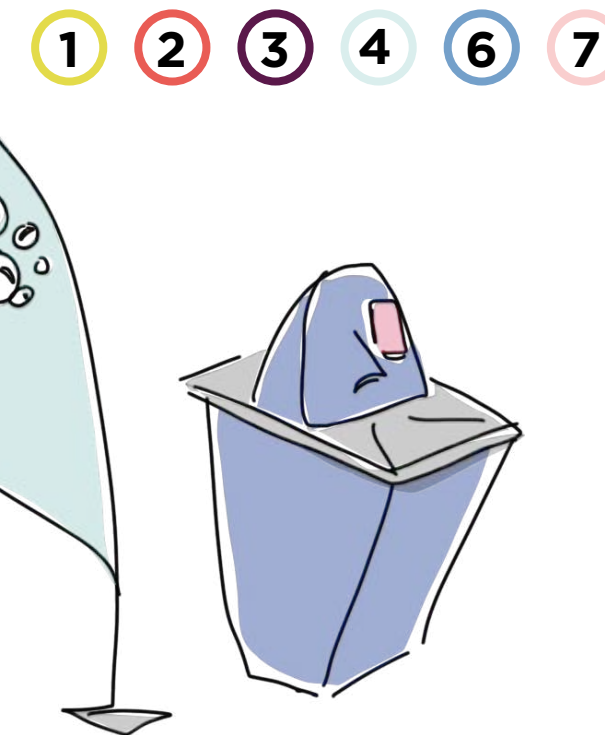
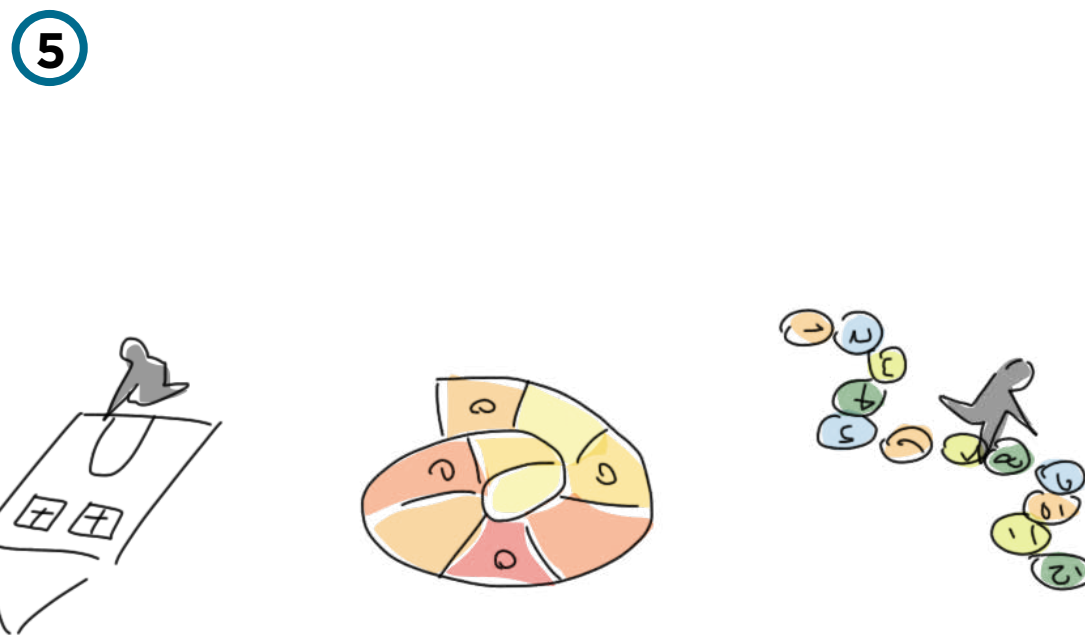
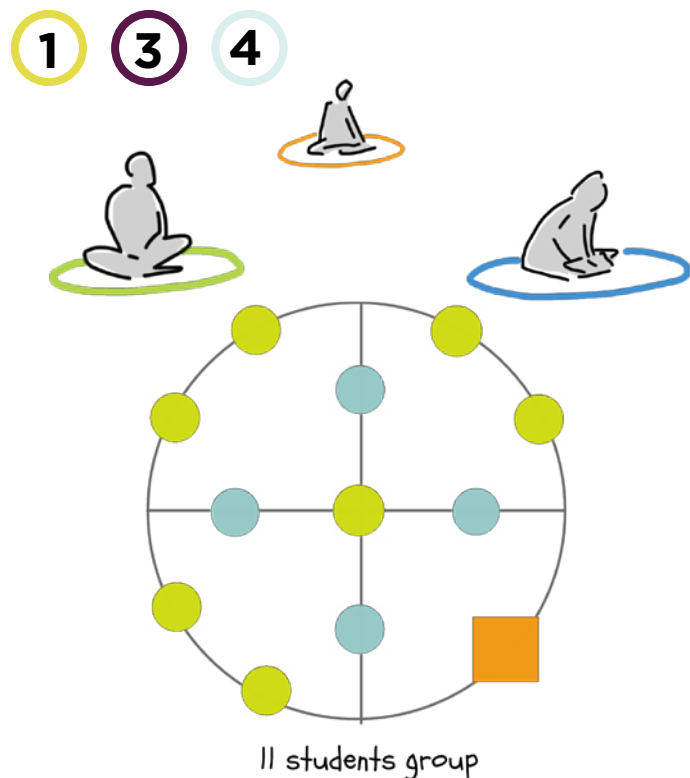
- building thermal control,
- creating pleasant, appropriate light environments.

Installed externally, Soltis 86 blocks up to 88% of the solar radiation



Shade structures create usable instruction areas in the linear courtyard. Classrooms can be opened up to the courtyard to extend space and allow more distance between students. Soltis Shade Fabric, which we recently used for another middle school, allows the most natural light and air flow, which reduces the wind load for structural engineers.





**RAINBOW HOOPS :**  
Easy to clean and lightweight to set up a learning space in minutes. The hoops delimitate the student own space and colors avoid confusions

Reused / Gym equipmen



**CHALKS :**  
Kids could express themselves and leave messages for their friends.

Low-cost / Personalization



**PORTABLE HANDWASH STATIONS :**  
Placed near the classrooms and workshop areas to be used before any activity.

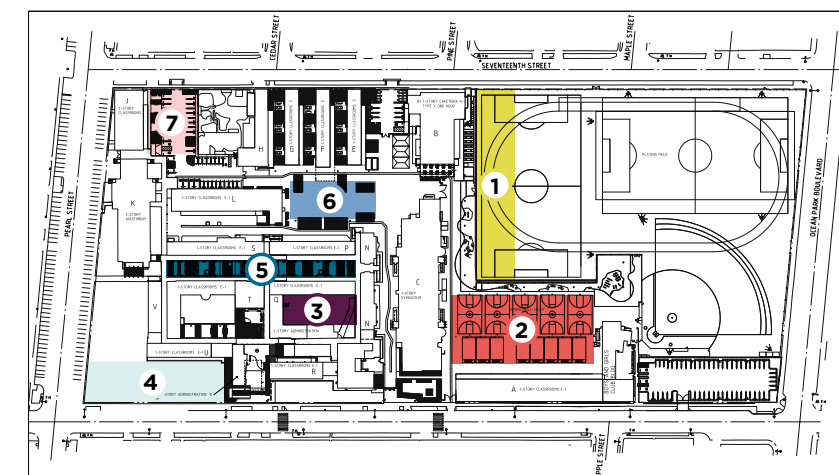
Rental



**STAND FLAGS :**  
Flags to signal the station. Kid's drawings or messages could be print on the fabric to encourage better hygiene routine.

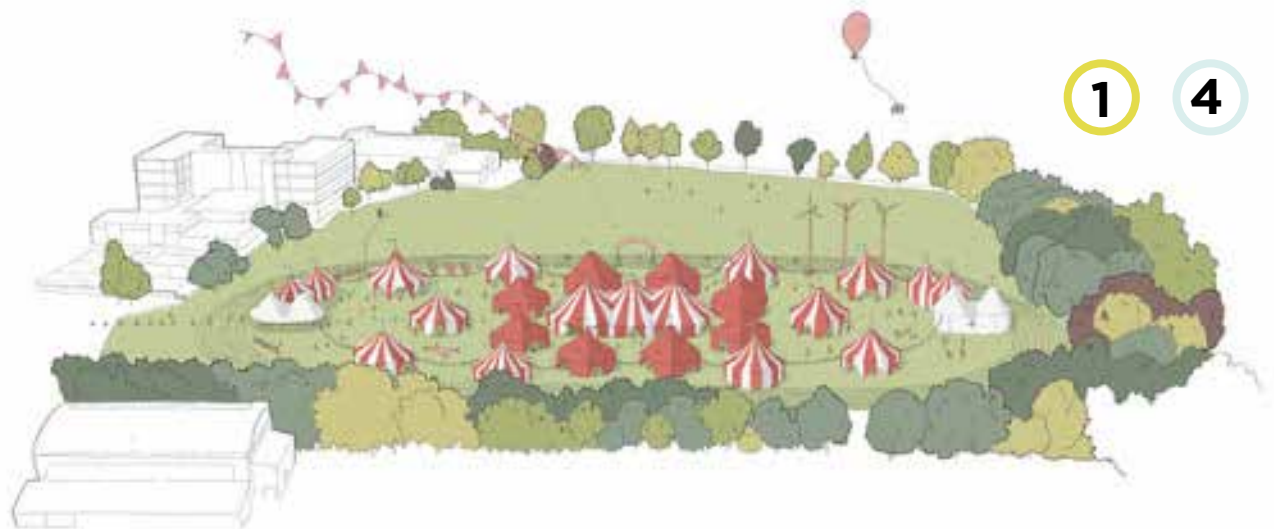
Low-cost / Personalization

Simple, inexpensive equipment—such as hula hoops, chalk, and flags—can define classroom areas and distances between students. Temporary markers can be used in passageways to ensure safe distances. Handwashing stations can be utilized outside to allow for easy cleaning.

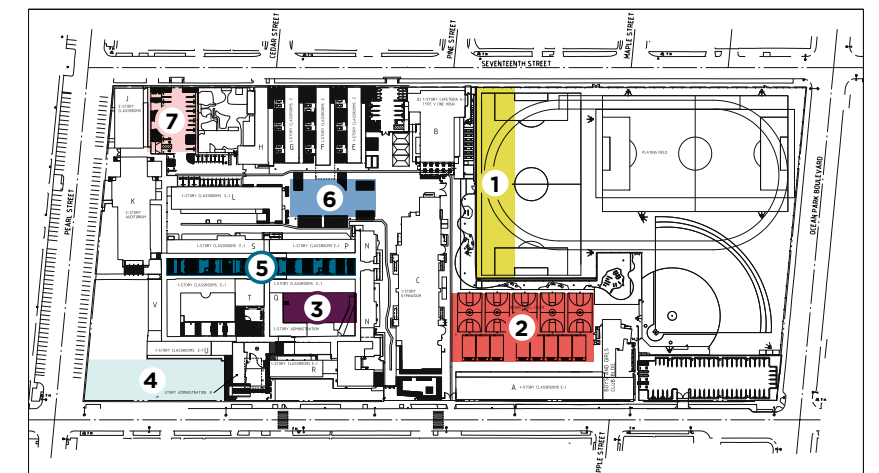




WRITABLE WALLS COULD BE ADDED TO DSA APPROVED STRUCTURES



- Simple and more complex ways to define classrooms outside
- Chain link fences with screening materials
- Tents
- Portable/prefabricated shipping containers







02-115686 - SINGLE POST WALKWAY



02-115681 - HIP END LUNCH SHELTER

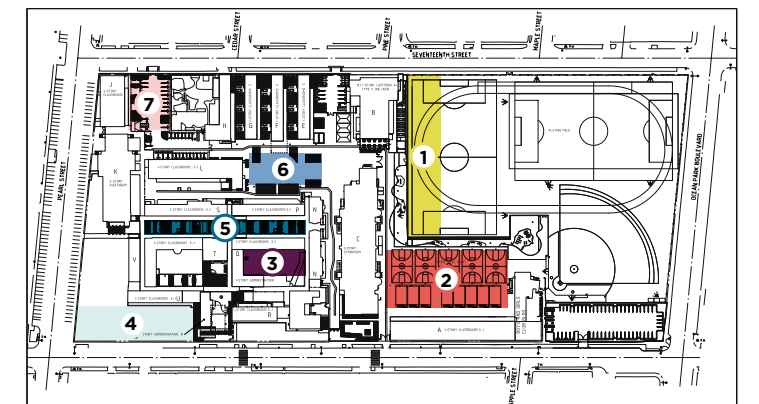


02-115685 - GABLE WALKWAY COVER

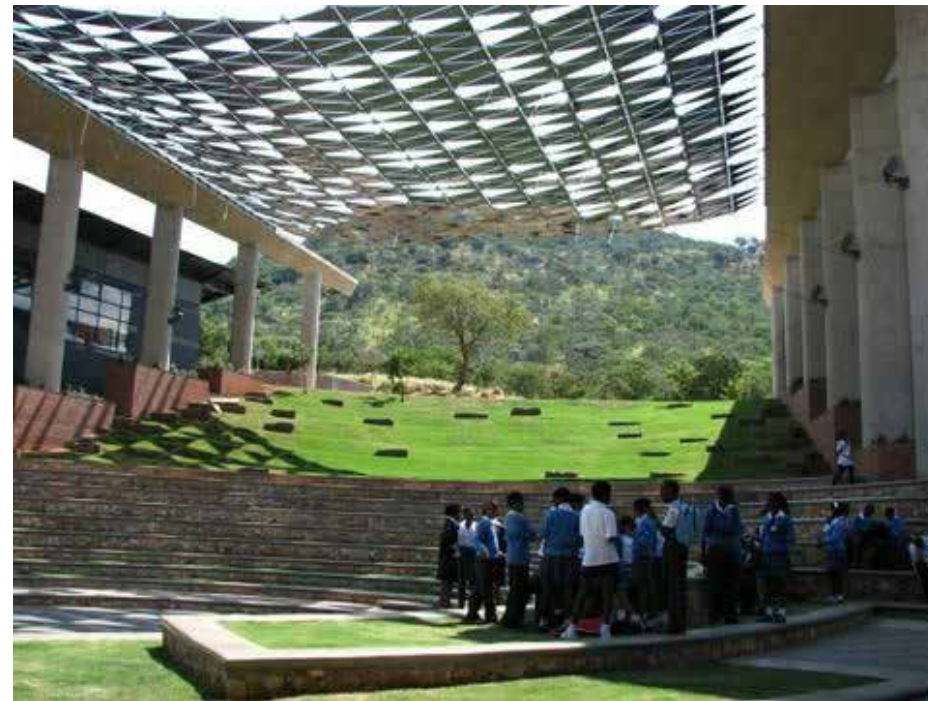
- DSA pre-approved shade structures to define classroom areas and provide shade
- Portable or installed whiteboards or chalkboards could be incorporated



02-115681 - SINGLE SLOPE LUNCH SHELTER

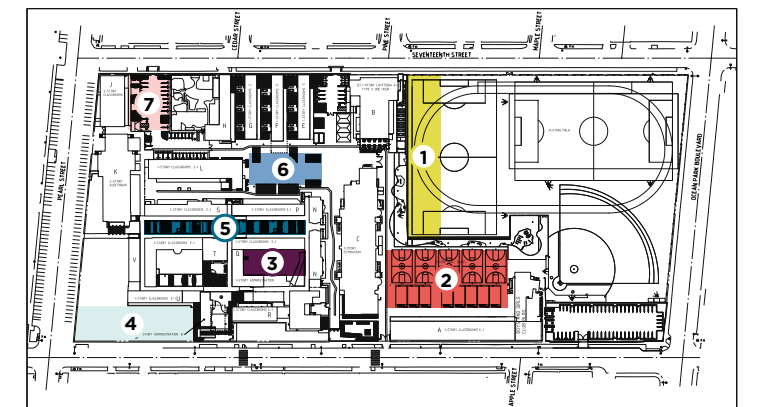






- Awnings can be attached to buildings to create shade
- Outdoor classrooms can be situated in areas that are naturally sheltered from winds and are shaded during the school day either by the buildings or by trees.

1 5



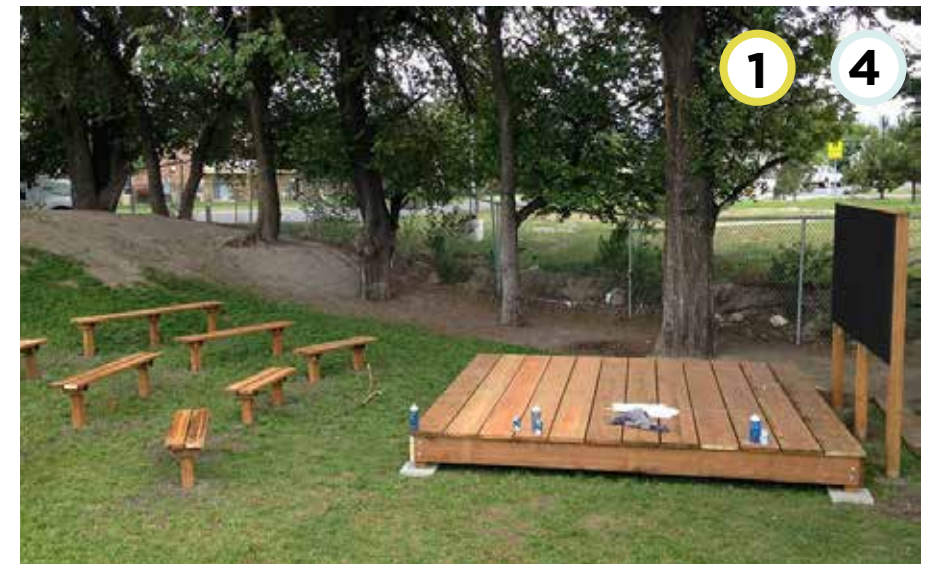




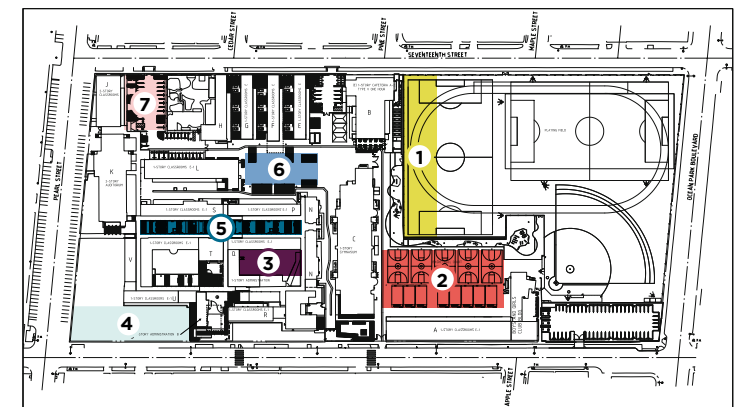
- Umbrellas and add-on shades can be used in spaces already defined
- Moveable shades and accessories create flexibility and could be utilized again in the future







- Outdoor seating can be configured in different ways for different class types, student needs, and spaces







**Kore**  
Design LLC

**FLOOR WOBBLER  
DISC**



- Portable and configurable furniture can be used in temporary classrooms to limit sharing surfaces



- Personal care stations for students learning outside, limiting the need to re-enter the school facilities
- Handwashing & sanitizing stations make keeping hands clean easier
- Sunscreen stations ensure students can reapply as necessary



- Outfitting students with hats, sunglasses, and sun protective clothing eases all-day outdoor learning





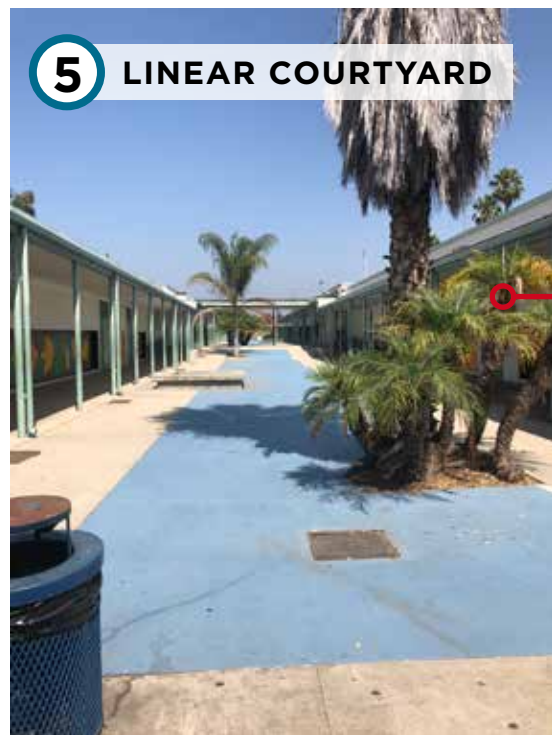
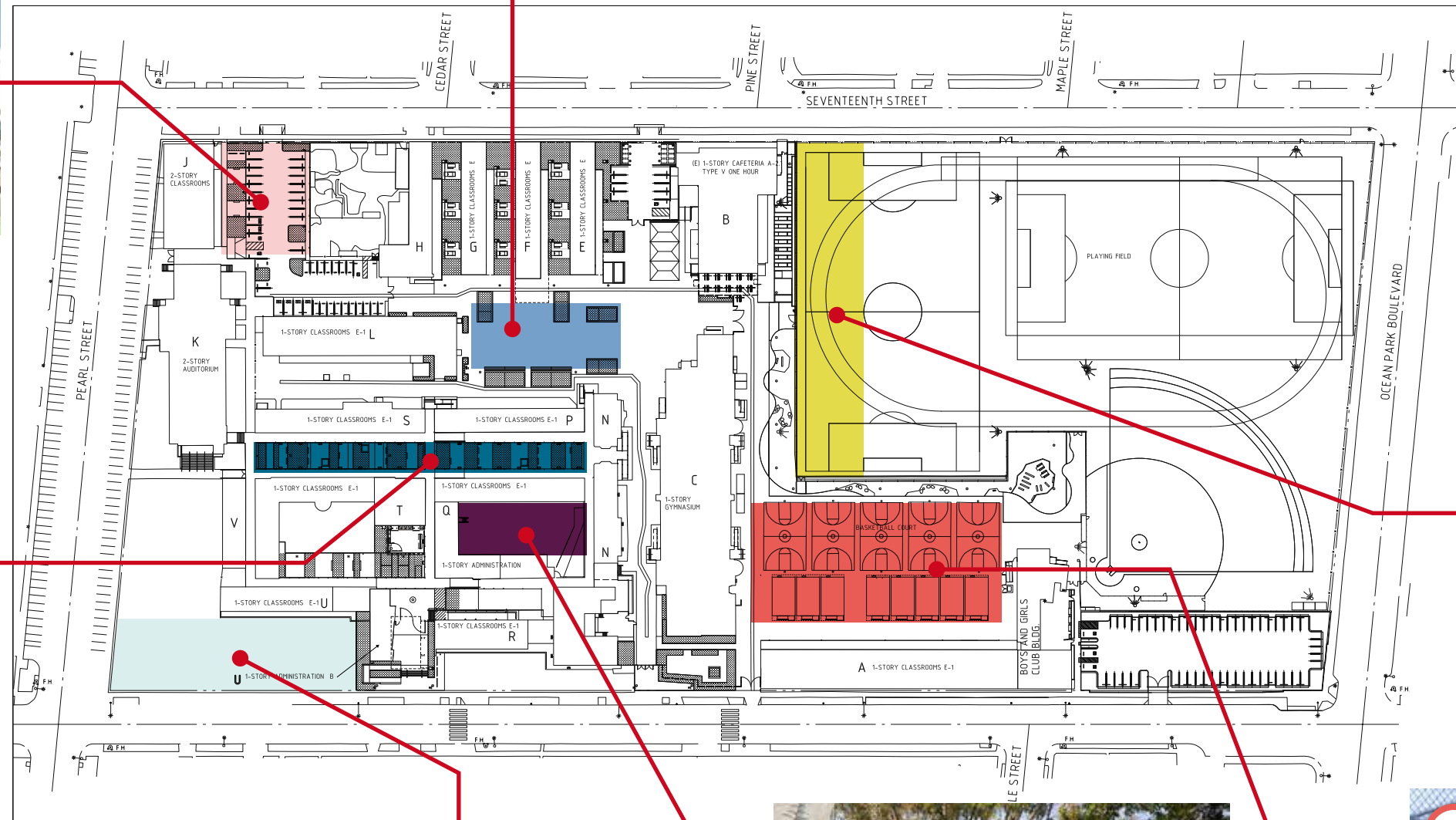


6 CAMPUS QUAD

What do you think would work best in these spaces?



7 MUSIC PARKING LOT



5 LINEAR COURTYARD



1 EDGES OF FIELD



4 BIG LAWN



3 8TH GRADE COURTYARD



2 TENNIS COURTS





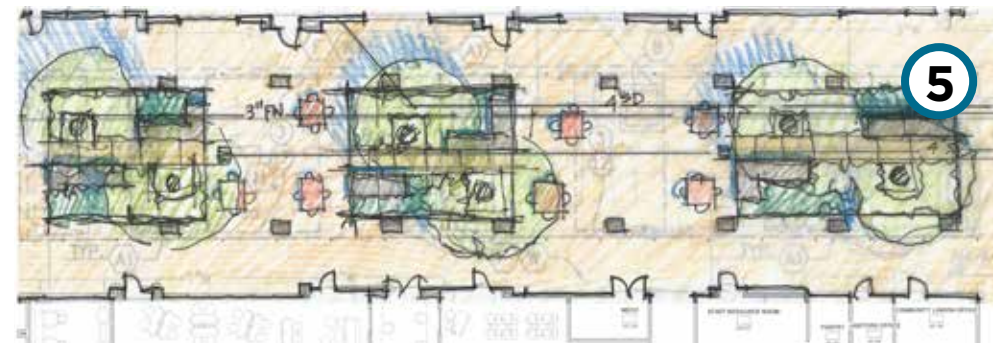
Campus Quad



Campus Quad



Linear Courtyard



Linear Courtyard



8th Grade Courtyard

